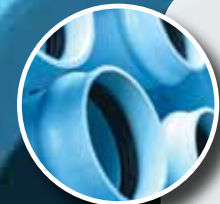




PVC

PRODUCTS



BLUE BRUTE™ (C900)

- Used in transmission/distribution, municipal water systems and other services.
- Available in 4"-12" diameters.
- Long-term hydrostatic strength to meet high safety requirements.
- Produced in blue, white, purple and green.

Meets AWWA C900, FM 1612 and ASTM D1784 cell class 12454; Gaskets meet ASTM F477; Joints meet ASTM D3139.



BIG BLUE™ (C905)

- Used in transmission/distribution, municipal water systems and other services.
- Available in cast-iron ODs in 14"-48" diameters.
- Long-term hydrostatic strength to meet high safety requirements.

Meets AWWA C905 and ASTM D1784 cell class 12454; Gaskets meet ASTM F477; Joints meet ASTM D3139.



ULTRA BLUE™ PVCO

- Used in potable water and force main applications.
- Available in cast-iron ODs in 6"-16" and IPS ODs in 6"-12" diameters.
- Molecularly oriented to be lighter yet stronger—as much as four times stronger than conventional PVC.
- Delivers HDB of 7,100 psi vs. HDB of 4,000 psi of conventional PVC pipe.

Meets AWWA C909 or ASTM F1483, and UL 1285; Gaskets meet ASTM F477; Joints meet ASTM D3139.



GRAVITY SEWER

- Used for sanitary sewage collection systems.
- Available in 4"-48" diameters.
- Ring-Tite™ joints.
- Improved design for reserve strength and stiffness to increase load-bearing capacity.

Meets ASTM D3034 (SDR 35 and 26) and ASTM F679 (PS46 and PS115) and ASTM D1784 cell class 12454 or 12364; Gaskets meet ASTM F477; Joints meet ASTM D3212.



ULTRA CORR™/ULTRA RIB™ (CORRUGATED)

- Used for sanitary sewer and storm drain applications.
- Available in 24"-36" (Ultra Corr™) and 8"-24" (Ultra Rib™) diameters.
- Increased load-bearing and system capacity at a reasonable cost.

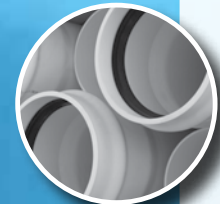
Meets AASHTO M304, ASTM F794 and F949; Gaskets meet ASTM F477; Joints meet ASTM D3212.



SOLVENT WELD

- Used in plumbing, irrigation and industrial applications.
- Available in ½"-16" diameters.
- Available in Schedule 40 and 80.
- Class pipe 63, 100, 125, 160, 200 and 315 psi.
- 20-foot standard lengths to reduce joint lengths.

Meets ASTM D1785, D2241, D2665, D2729, D2949, D3034 and F891.

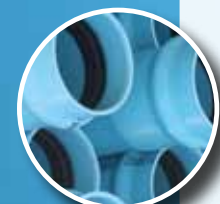


IRRIGATION P.I.P.

- Used in irrigation, rural water systems other services.
- Available in 6"-27" diameters.
- Produced in accordance with Natural and Resources Conservation Service 430-DD.
- Ring-Tite™ joints.
- Pressure-rated 63*, 80, 100 and 125 psi.

* meets internal spec only

Meets ASTM D1784 cell class 12454; Gaskets meet ASTM F477; Joints meet ASTM D3139.



IPS PRESSURE

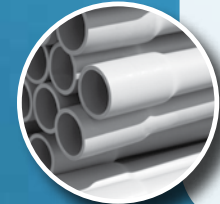
- Used in rural and agricultural water systems and other services.
- Available in 1½"-12" diameters.
- Ring-Tite™ joints.
- Pressure-rated 63, 100, 125, 160, 200 and 250 psi.

Meets ASTM D2241, ASTM D1784 cell class 12454; Gaskets meet F477; Joints meet ASTM 3139.



100-FOOT LOW HEAD

- Used in low-pressure irrigation applications.
- Available in 8"-20".
- P.I.P. and I.P. OD dimensional pipe.



ELECTRICAL CONDUIT AND DUCT

- Used in power, telephone and other electrical duct systems.
- Available in ½"-6" diameters.
- Schedule 40 and 80 Conduit, Schedule 40 Utility and PVC "Gas Sleeve" Pipe, EB/DB.
- Comes in standard 10-foot lengths, as well as 20-foot lengths to cover more ground and reduce joint needs.
- Eagle Loc Conduit available.

Meets UL-651, NEMA TC-2, TC-6 & 8, and ASTM F512.



ABS

- Acrylonitrile Butadiene Styrene.
- Used in commercial, residential and industrial applications for sanitary drain, waste and vent.
- Available in 1½"-6" diameters (Schedule 40/DWW and/or with Cellular Core).

Meets ASTM F628 or ASTM 2661.



DWV

- Used for drain waste and vent applications.
- Solid core available in ½"-16" diameters.
- Foam core available in 1½"-12" diameters.
- Schedule 40 pipe dimensions.

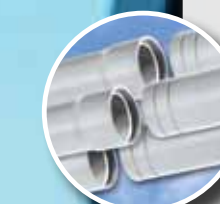
Meets ASTM D2665 and F891.



D2729/D3034 SEWER/DRAIN PIPE

- For landscape drainage applications.
- Available in 3"-6" diameters, solid and perforated.
- 10-foot standard length for easy handling.

Meets ASTM D2729 or D3034.



EAGLE LOC WELL CASING

- Used in domestic, municipal, industrial or dewatering applications.
- Available in 4"-6" SDR 21, SDR 17 and SCH 40.

Meets ASTM F480.



F480 WELL CASING

- Used in irrigation applications.
- Available in 4"-12" diameters.
- Solvent weld.

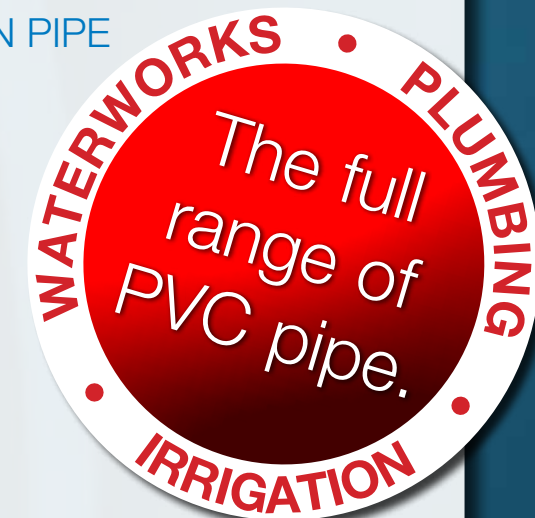
Meets ASTM F480.



THREADED DROP PIPE

- Used in domestic, municipal, industrial or dewatering applications.
- Available in 1"-2" diameters.
- Schedule 80 and Deep Drop/Schedule 120.
- Coupling available.

Meets ASTM D1784 cell class 12454.



ENGINEERED PRODUCTS



EAGLE LOC 900™

- JM Eagle C900 pipe with internal joint restraint mechanism.
- Used in potable water and sanitary sewer force mains in open-trench, horizontal directional drilling and road bore applications.
- Available in 4"-12" diameters, DR14 and DR18.
- Eagle Loc 905 in 14", 16" and 24" diameters available soon.

Meets AWWA C900, ASTM D1784 and UNI-B-13 Million Cycle Test.



EAGLE LOC IPS

- JM Eagle IPS pipe with internal joint restraint mechanism.
- Used in irrigation, rural water systems and other services in open-trench, horizontal directional drilling and road bore applications.
- Available in 3" - 8" diameters, DR 21.
- Pressure-rated 200 psi.

Meets ASTM 2241, ASTM D1784 cell class 12454, NSF 61.



SOLAR BLOK

- Used in above-ground irrigation applications.
- Available in ½"-4" diameters.
- Comes in brown.

Meets ASTM D1785.



BLACK PVC

- Used in solar plumbing applications.
- 1½" to 2" diameters.
- Schedule 40.



FITTINGS & ACCESSORIES

- Gasketed Sewer
- Electrical
 - Schedule 40 Conduit
 - Schedule 80 Conduit
 - Utility Duct
 - Junction Boxes

ULTRA BLUE™

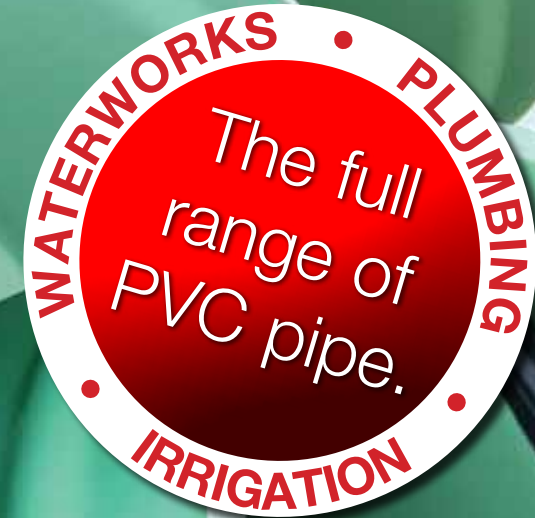
CIOD 6"-16" AWWA C909 AND IPS 6"-12" ASTM F1483

PVCO



JM Eagle

- THE COMPLETE BREADTH OF PRODUCT
- THE HIGHEST LEVEL OF SERVICE
- EXPEDITED DELIVERIES
- ALL MADE-IN-THE-USA PRODUCTS
- THE CONVENIENCE OF PVC AND PE ON ONE TRUCK



Exclusive Technology at its Strongest

- The highest-performing, lightest-weight, most cost-effective pressure pipe for potable water and force main systems.
- Molecularly oriented to be lighter yet stronger—as much as four times stronger than conventional PVC.
- The only molecularly oriented plastic pipe made in the United States.
- Delivers HDB of 7,100 psi vs. HDB of 4,000 psi of conventional PVC pipe.
- Has a higher cyclic fatigue strength, greater impact strength and a larger interior diameter than conventional PVC.
- Offers maximum flow capacity and is pressure tough, crush resistant and non-corrosive.

GREATER CRUSH RESISTANCE AND IMPACT STRENGTH

Able to withstand extreme compression, Ultra Blue can be crushed flat without cracking, splitting or failing, and holds up to severe abuse in handling and installation.

To watch a demonstration of Ultra Blue's remarkable crush resistance, visit www.JMEagle.com/UltraBlue

MEETS NEW PRESSURE CLASSES OF 165 AND 235 PSI FOR CIOD AWWA C909 AND 200 PSI FOR IPS ASTM F1483.

Meets AWWA C909 or ASTM F1483, and UL 1285; Gaskets meet ASTM F477; Joints meet ASTM D3139.

PVC PRODUCTS



GLOBAL HEADQUARTERS:

5200 West Century Blvd
Los Angeles, CA 90045
T: 800.621.4404 (Dial "2" for Sales)
F: 310.693.8281

www.JMEagle.com

REGIONAL OFFICE:

Nine Peach Tree Hill Road
Livingston, NJ 07039
T: 973.535.1633
F: 800.451.4170

J-M Manufacturing Company Inc. and PW Eagle Inc. are doing business as JM Eagle.