

# Irrigation PIP | Ring-Tite

PRESSURE-RATED PVC PIPE



MADE IN AMERICA



ASTM D2241  
ASTM D1785 Cell Class 12454

GASKETS: ASTM F477

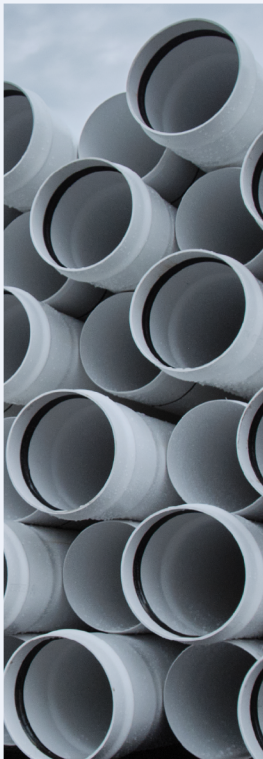
JOINTS: ASTM D3139

## MARKETS



IRRIGATION

## DESCRIPTION



### IRRIGATION PIP - RING TITE

Nominal Laying Length:

**20/22 feet**

(Laying length tolerances are in accordance with NRCS standards)

### PIPE SIZES

6", 8", 10", 12", 15",  
18", 21", 24", 27"

### PIPE COLOR

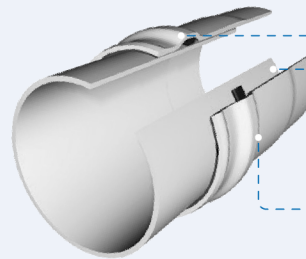
WHITE

### RING-TITE JOINT

Flexible elastomeric Rieber® locked-in gasket provides a tight seal that protects and compensates for expansion, contraction, vibration, or other movements.

Quick and easy to assemble with a simple push, there's no field mixing or application of cement.

Meets or exceeds ASTM D3219 for joint tightness, including a 22-inch Hg vacuum and a 25-foot head pressure test.



• Rieber® sealing ring provides tight, flexible seal.

• Spigot pipe ends are supplied from the factory with bevels.

• The bell is an integral part of the pipe length with the same strength.

### ASTM D2241

63 psi	SDR 64
100 psi	SDR 41
125 psi	SDR 32.5
160 psi	SDR 26

## BENEFITS

### INSTALLATION

- Lightweight, great for manual installation.
- Field-cut with a power saw or handsaw; bevel without complicated machinery.
- Does not need lining, wrapping, coating, or cathodic protection to prevent galvanic corrosion.



### FEATURES

- Unaffected by corrosive elements: sewer gas, sulfuric acid, alkaline, or acidic soils.
- Consistency in carrying capacity (flow coefficient, C=150), for savings in pumping and material costs.

# Irrigation PIP | Ring-Tite

PRESSURE-RATED PVC PIPE



## SUBMITTAL AND DATA SHEET

PIPE SIZE (IN)	AVG. O.D. (IN)	NOM. I.D. (IN)	MIN. T. (IN)	AVG. E <sub>1</sub> (IN)	AVG. E <sub>2</sub> (IN)	APPROX. D <sup>9</sup> (IN)	APPROX. WGT (LBS/FT)
PRESSURE CLASS: 160 psi (SDR 26)*							
15	15.300	14.06	0.588	7.25	-	18.786	18.404
PRESSURE CLASS: 125 psi (SDR 32.5)*							
PIPE STIFFNESS: 57 psi							
6	6.140	5.74	0.189	5.06	-	7.18	2.360
8	8.160	7.63	0.251	5.77	-	9.42	4.180
10	10.200	9.53	0.314	6.89	-	12.67	6.566
12	12.240	11.44	0.377	7.27	-	13.99	9.487
15	15.300	14.30	0.471	7.50	-	18.52	14.817
18	18.701	17.48	0.575	7.12	7.67	22.42	22.110
21	22.047	20.61	0.678	7.88	8.67	26.51	30.859
24	24.803	23.19	0.763	8.47	9.67	29.58	39.548
27	27.953	26.12	0.860	9.41	10.67	31.41	50.026
PRESSURE CLASS: 100 psi (SDR 41)*							
PIPE STIFFNESS: 28 psi							
6	1.900	5.82	0.150	5.06	-	7.10	1.885
8	8.160	7.74	0.199	5.77	-	9.30	3.336
10	10.200	9.67	0.249	6.89	-	12.528	5.217
12	12.240	11.61	0.299	7.27	-	13.82	7.563
15	15.300	14.51	0.373	7.50	-	18.32	11.795
18	18.701	17.73	0.456	7.12	7.67	22.17	17.649
21	22.047	20.91	0.538	7.88	8.67	26.22	24.647
24	24.803	23.52	0.605	8.47	9.67	29.25	31.329
27	27.953	26.51	0.682	9.41	10.67	30.69	39.932
PRESSURE CLASS: 80 psi (SDR 51)*							
PIPE STIFFNESS: 14 psi							
6	6.140	5.89	0.120	5.06	-	7.04	1.516
8	8.160	7.82	0.160	5.77	-	9.22	2.688
10	10.200	9.78	0.200	6.89	-	12.41	4.211
12	12.240	11.73	0.240	7.27	-	13.68	6.079
15	15.300	14.66	0.300	7.50	-	18.15	9.530
18	18.701	17.92	0.366	7.12	7.67	21.96	14.216
21	22.047	21.13	0.432	7.88	8.67	25.97	19.874
24	24.803	23.77	0.486	8.47	9.67	28.98	25.254
27	27.953	26.79	0.548	9.41	10.67	30.15	32.244

This information may have been updated. Please visit [www.jmeagle.com](http://www.jmeagle.com) for all updated information and warranty details.

CUSTOMER SERVICE: 1.800.621.4404

THIS PRODUCT IS MADE IN AMERICA

UPDATED NOVEMBER 2025

### SUBMITTAL AND DATA SHEET

PIPE SIZE (IN)	AVG. O.D. (IN)	NOM. I.D. (IN)	MIN. T. (IN)	AVG. E. (IN)	APPROX. D <sup>9</sup>	APPROX. WGT (LBS/FT)	APPROX. WGT (LBS/FT)
PRESSURE CLASS: 63 psi (SDR 64)*							
15	15.300	14.78	0.239	7.50	-	18.00	7.651
18	18.701	18.08	0.292	7.12	7.67	21.78	11.394

#### PRODUCT STANDARD

ASTM D2241

#### GASKET

ASTM F477

#### NOMINAL LAYING LENGTH

**20/22 feet**

(Laying length tolerances are in accordance with ASTM standards.)

#### PIPE COMPOUND

ASTM D1784 Cell Class 12454

#### INTEGRAL BELL JOINT

ASTM D3139

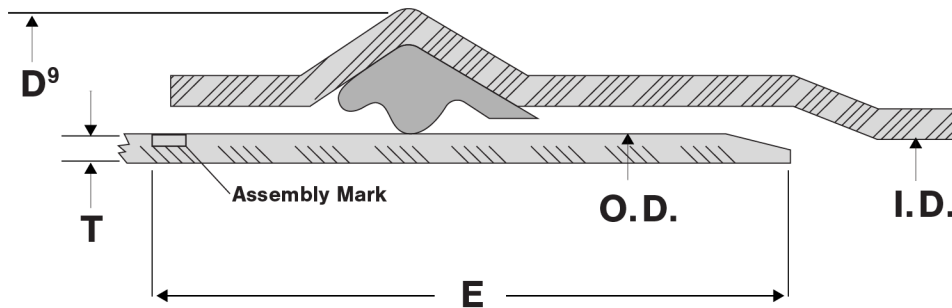
#### INSTALLATION

JM Eagle™ Irrigation Installation Guide

Manning Coefficient (n) = 0.009 - Hazen-Williams Coefficient (c) = 150

\*Supply may vary based on plant location. Please call regarding availability.

\*\* Please call for product and/or listing availability prior to order.



**I.D.** - Inside Diameter

**E** - Distance between Assembly Marks and the end of the spigot.

**T** - Minimum Wall Thickness

**D<sup>9</sup>** - Bell Outside Diameter

**O.D.** - Outside Diameter

