



EAGLE LOC 900RL

**PRESSURE-RATED PVC PIPE
INTERNAL RESTRAINED JOINT**

Product One Sheet >

Eagle Loc900RL

PRESSURE-RATED PVC PIPE INTERNAL RESTRAINED JOINT



AWWA C900 PIPE UL 1285 LISTED
FM 1612, ASTM D1784 Cell Class 12454
ANSI/NSF 61

MARKETS



POTABLE



IRRIGATION



RECLAIM



SEWER

DESCRIPTION



EAGLE LOC900

Nominal Laying Length:

20 feet

(Laying length tolerances are in accordance with AWWA and ASTM standards)

PIPE SIZES

4" 6" 8" 10"
12" 16" 24"

PIPE COLOR

BLUE

GREEN

PURPLE

WHITE

EAGLE LOC 900RL™ RESTRAINING TECHNOLOGY

STAINLESS LOCKING SEGMENTS

Locking segments engage progressively as load increases.

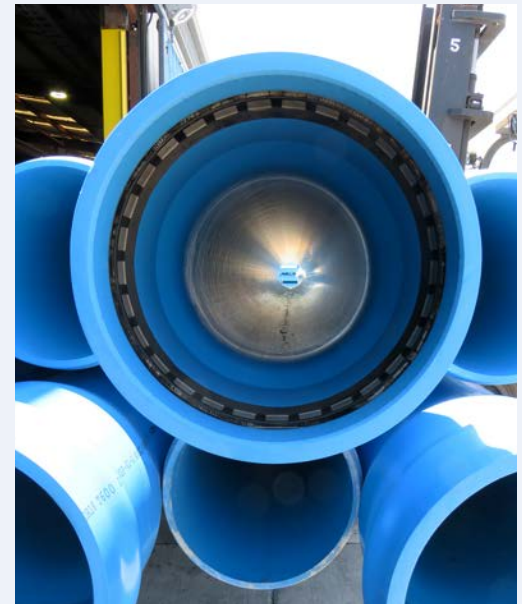
RIEBERLOK GASKET

Proprietary seal tolerates dimensional variation of pipe bells and deflection.

AWWA C900

305 psi	(DR 14)
235 psi	(DR 18)
165 psi	(DR 25)

NOTE: FM Approvals Pressure Class 185 psi for DR18 and 250 psi for DR14.



BENEFITS

INSTALLATION

- Feasible for multiple applications: open-trench, and casing applications.
- Easy installation: simple push-on assembly.
- Field-cut with a power saw or handsaw; bevel without complicated machinery.
- Eagle insertion stop prevents over-belling/over-insertions.

FEATURES

- Unaffected by corrosive elements: sewer gas, sulfuric acid, alkaline, or acidic soils.
- Consistency in carrying capacity (flow coefficient, C=150) for savings in pumping and size of pipe.
- Does not need lining, wrapping, coating, or cathodic protection to prevent galvanic corrosion.



*50 year warranty only applicable to C900/Eagle Loc 900, C909, AWWA C901/C906. Check www.jmeagle.com/warranty for full details.

SUBMITTAL AND DATA SHEET

PIPE SIZE (IN)	AVG. O.D. (IN)	NOM. I.D. (IN)	MIN. T. (IN)	APPROX. E ¹	APPROX. E ²	APPROX. D ⁹	APPROX. WGT (LBS/FT)
PRESSURE CLASS: 305 psi (DR 14)							
PIPE STIFFNESS: 815 psi							
4	4.80	4.07	0.343	4.50	5.50	6.365	3.20
6	6.90	5.86	0.493	5.25	6.25	8.887	6.70
8	9.05	7.68	0.646	6.25	7.25	11.499	11.60
10	11.10	9.42	0.793	7.25	8.25	14.072	17.40
12	13.20	11.20	0.943	8.25	9.25	16.570	24.70
16	17.40	14.85	1.242	7.25	8.75	21.637	43.80
24	25.80	21.893	1.843	9.75	11.25	31.958	98.33
PRESSURE CLASS: 235 psi (DR 18)							
PIPE STIFFNESS: 364 psi							
4	4.80	4.23	0.267	4.50	5.50	6.204	2.50
6	6.90	6.09	0.383	5.25	6.25	8.654	5.30
8	9.05	7.98	0.503	6.25	7.25	11.195	9.10
10	11.10	9.79	0.617	7.25	8.25	13.699	13.80
12	13.20	11.65	0.733	8.25	9.25	16.125	19.50
16	17.40	15.35	0.967	7.25	8.75	21.135	34.60
24	25.80	22.762	1.433	9.75	11.25	31.089	77.97
PRESSURE CLASS: 165 psi (DR 25)							
PIPE STIFFNESS: 129 psi							
4	4.80	4.39	0.192	4.50	5.50	6.045	1.90
6	6.90	6.31	0.276	5.25	6.25	8.427	3.90
8	9.05	8.28	0.362	6.25	7.25	10.896	6.70
10	11.10	10.16	0.444	7.25	8.25	13.332	10.10
12	13.20	12.08	0.528	8.25	9.25	15.69	14.30
16	17.40	15.92	0.696	7.25	8.25	20.561	25.20
24	25.80	23.612	1.032	9.75	11.25	30.239	56.98

Eagle Loc900RL

PRESSURE-RATED PVC PIPE INTERNAL RESTRAINED JOINT



SUBMITTAL AND DATA SHEET

PRODUCT STANDARD

AWWA C900 Pipe UL 1285 Listed

CERTIFICATION

ANSI/NSF 61,
FM 1612 (DR 14, 18, 4"-12")

NOMINAL LAYING LENGTH

20 feet

(Laying length tolerances
are in accordance with AWWA
and ASTM standards.)

PIPE COMPOUND

ASTM D1784 Cell Class 12454

INSTALLATION

JM Eagle™ Eagle Loc 900RL
Installation Guide

Manning Coefficient (n) = 0.009
Hazen-Williams Coefficient (c) = 150



- I.D.** - Inside Diameter
- O.D.** - Outside Diameter
- D⁹** - Bell Outside Diameter
- R** - Reiber Gasket
- T** - Grip Ring
- E** - Distance between
Assembly Marks and
the end of the spigot.

